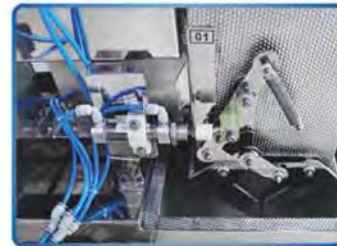
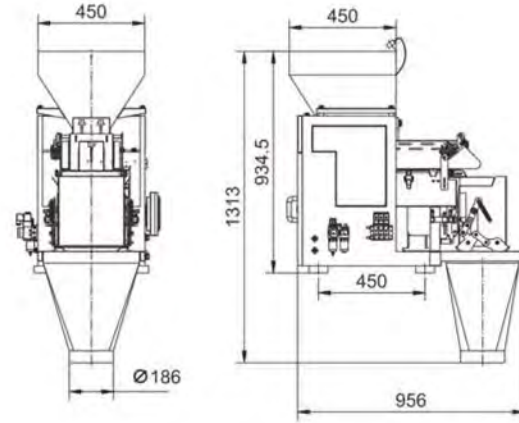
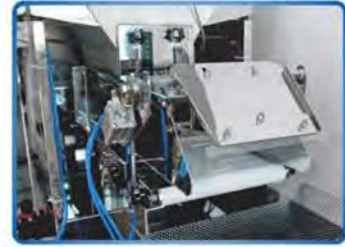


2nd G Single Head Belt Weigher



Application

It is suitable for brown sugar, industrial salt and other materials with slight viscosity, as well as fresh corn kernels, cauliflower, onion slices and other block, diced, stem and other vegetable products.

Features

1. Grand new modular control system.
2. Parameter can be freely adjusted according to production.
3. Adopt the stepless feeding mode to control the flow of materials in real time to ensure accurate weighing.

Mechanical Character

1. The whole machine is made of stainless steel food grade materials to ensure food hygiene and safety.
2. Custom food grade conveyor belts to meet different application needs of different materials.
3. Easy-to-remove structure for easy maintenance and cleaning.
4. Customized special load cell to improve weighing accuracy.
5. Equipped with independent gates, automatically realize the opening and closing of the gate according to the signal feedback.
6. Material contact parts can be quickly disassembled

Technical Specification

Model	JW-AX1
Identify Code	XM1-2-2
Weighing Range	500~12000g
Accuracy	X(1)
Max Speed	8 P/M
Hopper Volume	15L
Parameters Preset No.	100
Max Products Mixed	1
Power Requirement	220V / 250W / 50/60Hz / 1.2A
Packing Dimension(mm)	1150(L)x700(W)x1090(H)