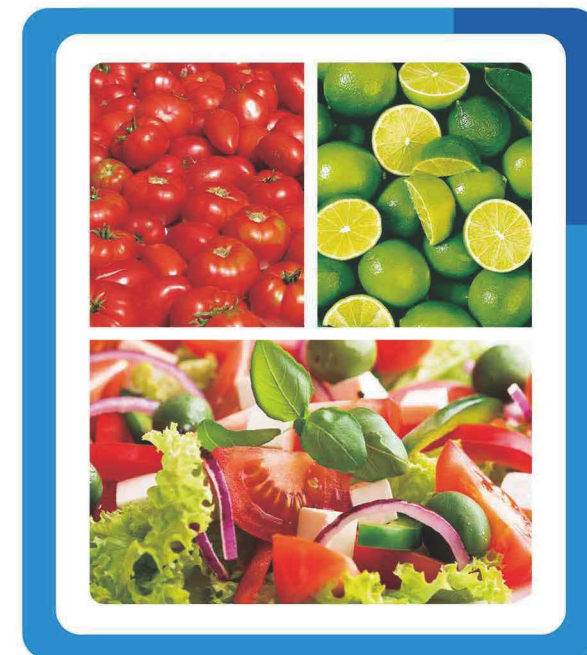
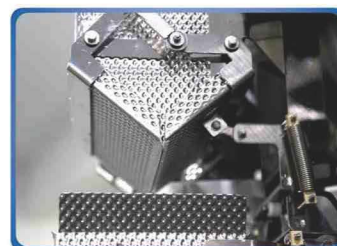
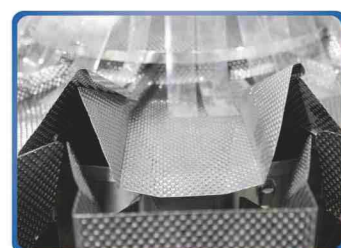
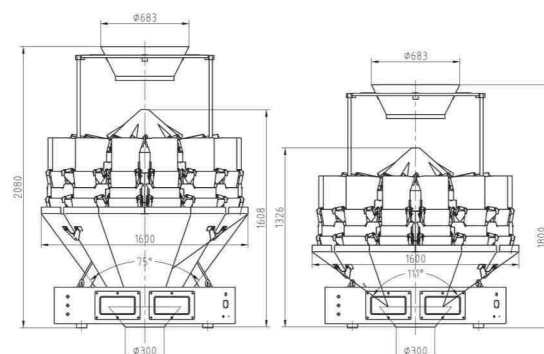


Salad Weigher



Application

It is suitable for weighing large volume products such as potatoes, tomatoes, onions, fruits, vegetable and salad with large target weight.

Features

1. High-precision, high-standard special load cell, resolution up to 2 decimal places.
2. Program recovery function can reduce operation failures, Support multi-segment weight calibration.
3. No products auto pause function can improve weighing stability and accuracy.
4. 100 programs capacity can meet various weighing requirement, user-friendly help maun in touch screen contributes to easy operation.
5. Linear amplitude can be adjusted independently, can make the feeding more uniform.

6. 15 languages available for global markets.

Mechanical Character

1. Speed adjustable rotary top cone is suitable for different product feeding.
2. Enhanced linear vibrator improves the flowability of material.
3. The declinational special linear vibrator pan, ensure smooth feeding.
4. 60° dimple discharge chute contributes to less sticky problems.
5. Optional weighing type material detection, accurate control of feeding time, material thickness, to ensure the accuracy of the weighin.
6. The whole cast aluminum thickening machine case enhanced the strength of the machine, and shorten sample stable time.

Technical Specification

Model	FT-AM10	FT-AM14
Identify Code	AM10-1-11	AM14-1-11
Weighing Range	100~3000g	100~3000g
Accuracy	X(1)	X(1)
Max Speed	50P/M	80P/M
Hopper Volume	5L	
Control Panel	7" Touch Screen	
Options	Dimple Plate /Timing Hopper /Printer / Reject Device	
Driving System	Step Motor	
Power Requirement	220V / 1500W / 50/60Hz / 10A	220V / 1500W / 50/60Hz / 12A
Packing Dimension(mm)	1950(L)x1280(W)x1690(H)	2195(L)x1380(W)x2060(H)
Gross Weight	700kg	850kg